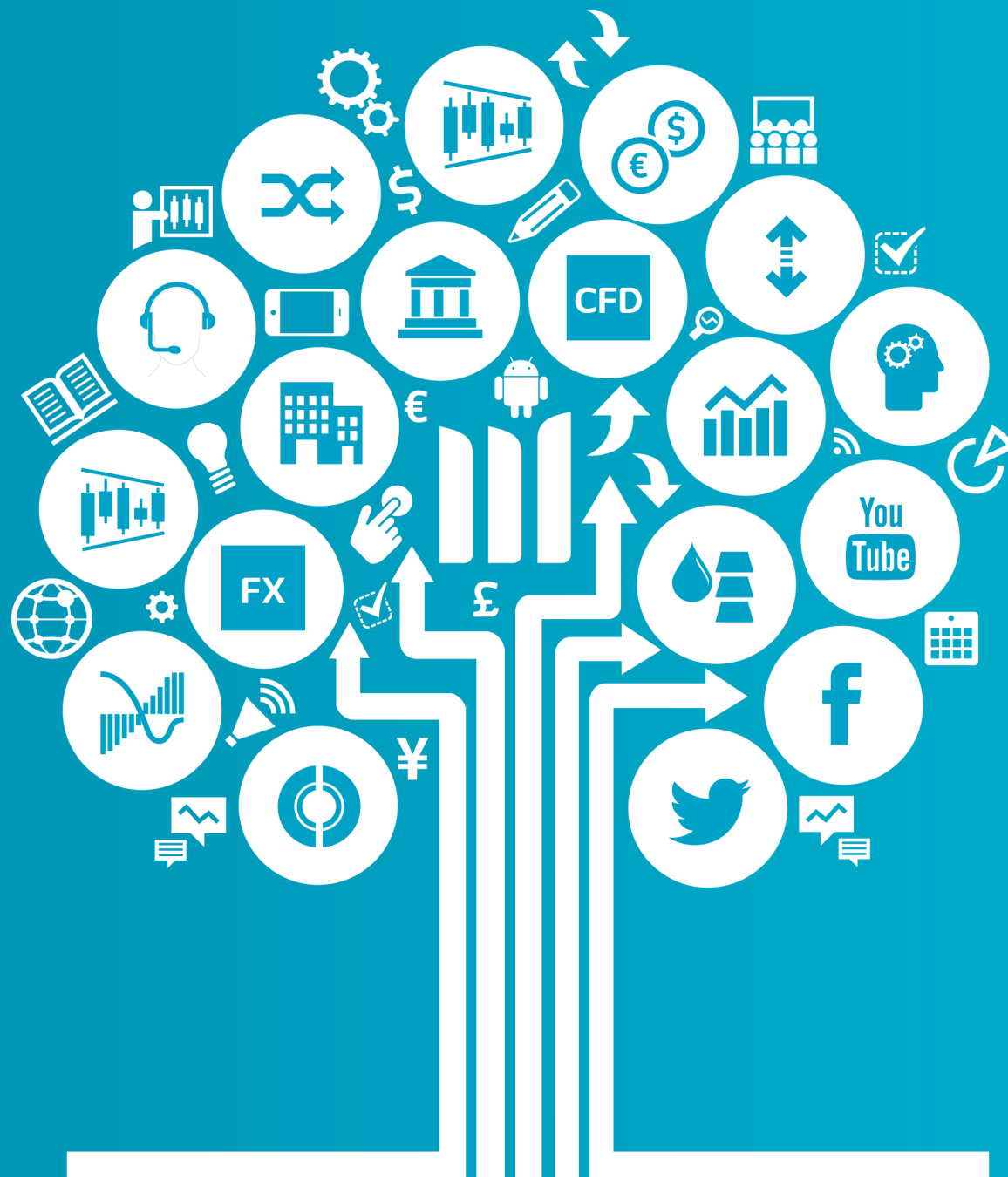


This concise guide has been put together to help you quickly familiarise yourself with the many features and tools available on the Next Generation platform.

Learn where to find products to trade and market news, how to access charts, place different types of orders, monitor positions, get live help and more.

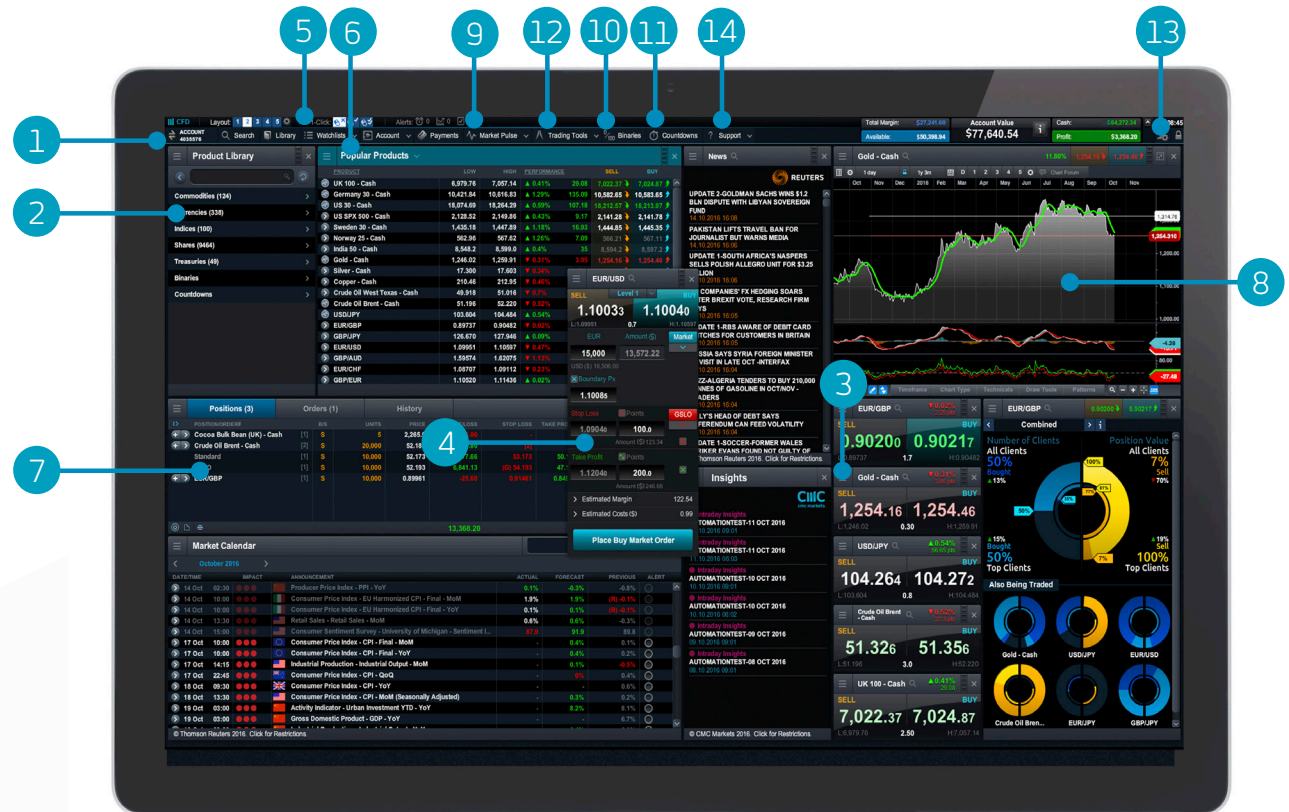


Contracts For Difference (CFDs) are leveraged products and carry a high level of risk to your capital. Losses can exceed your deposits, so ensure you understand the risks. Digital 100s and Countdowns carry a level of risk to your capital as you could lose all of your investment. Invest only what you can afford to lose. These products may not be suitable for all clients therefore ensure you understand the risks and seek independent advice.

Get started now

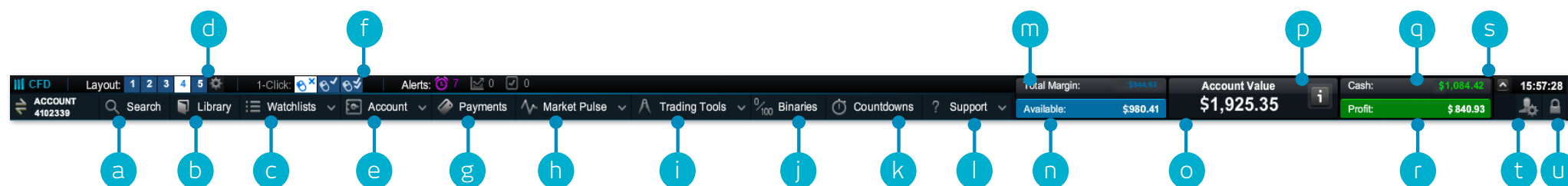
This quick guide will help you get to know the following features...

1. Navigation toolbar and account
2. Product Library
3. Drop-down menu navigation
4. Place a trade using our Order ticket
5. 1-Click Trading
6. Watchlists
7. Monitor your account
8. Advanced charting
9. Market Pulse - News, Insights and Market Calendar
10. Digital 100s
11. Countdowns
12. Trading Tools
13. Settings
14. Support - Trader Development and Live Help



1. Navigation toolbar and account

Access our advanced tools and features, switch layouts, set preferences and monitor your account value



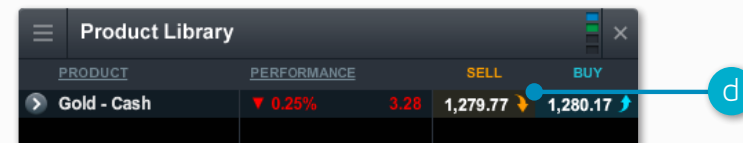
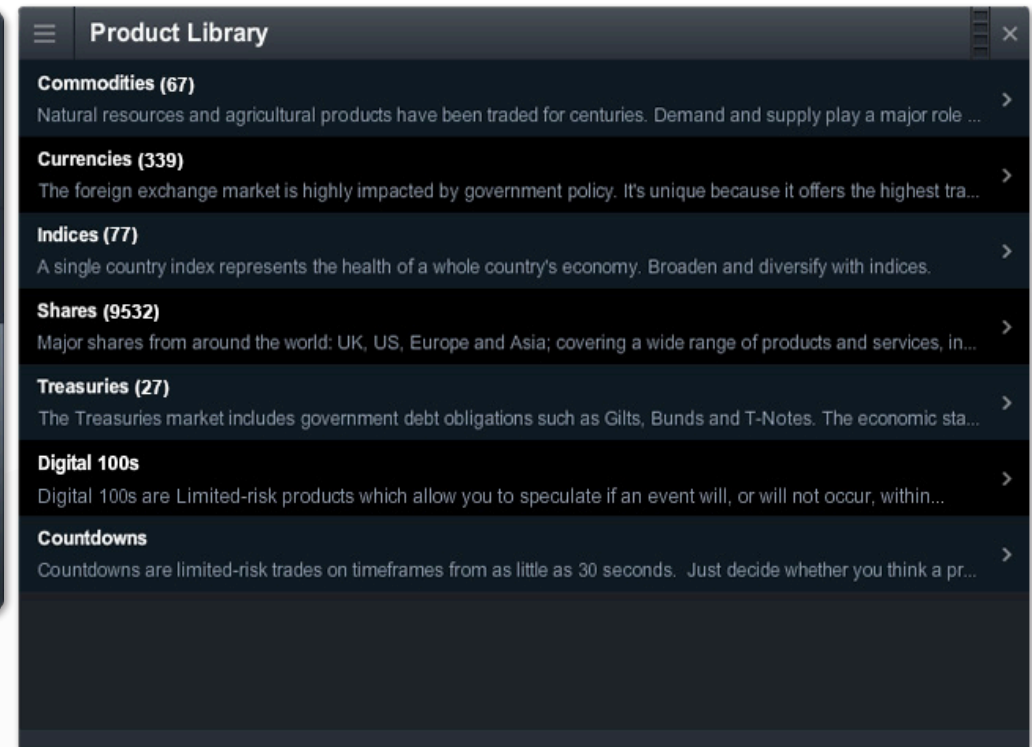
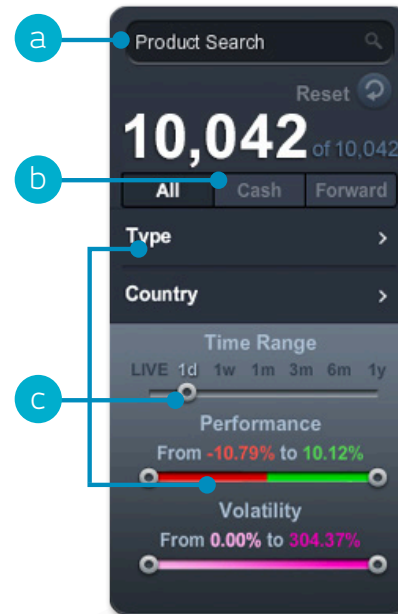
- a. Search for any product using the built-in search tool
- b. Open the Product Library to conduct a more advanced search and filter
- c. Open an existing watchlist containing popular products, or create a new one
- d. Switch between different saved screen layouts. Set layout to auto save or not through settings icon
- e. Manage your existing Positions and Pending Orders, and view your trading history
- f. Switch between 1-Click Trading modes
- g. Access details on how to fund your account
- h. Get the latest market information with our Market Pulse tools, including Market Calendar and Reuters News
- i. Access the range of CMC Markets trading tools to spot potential trading opportunities within the markets, as they happen
- j. Trade Digital 100s with limited risk and short timeframes, starting from just five minutes.
- k. Place straightforward, fast-paced trades over short timeframes on popular indices, commodities and FX pairs with Countdowns.
- l. Platform training, feedback and Live Help
- m. The amount of funds currently being used as Total Margin
- n. The funds you have available to open new Positions
- o. The current value of your trading account
- p. View details of your current Close-Out Levels – if these are reached your Positions may be closed
- q. The amount of available Cash you have in your account
- r. Your current aggregate profit or loss across all open Positions
- s. Show/hide account summary
- t. Access market data feeds, order preferences and account settings
- u. Securely log out of the platform

2. Product Library

Use the search and filter functions in the product library to find the products you want to trade

- Type in the name of the product you want to search for
- Filter by cash or forward products
- Filter products by type, region, price performance and volatility
- Click on a product's buy or sell price to open an order ticket

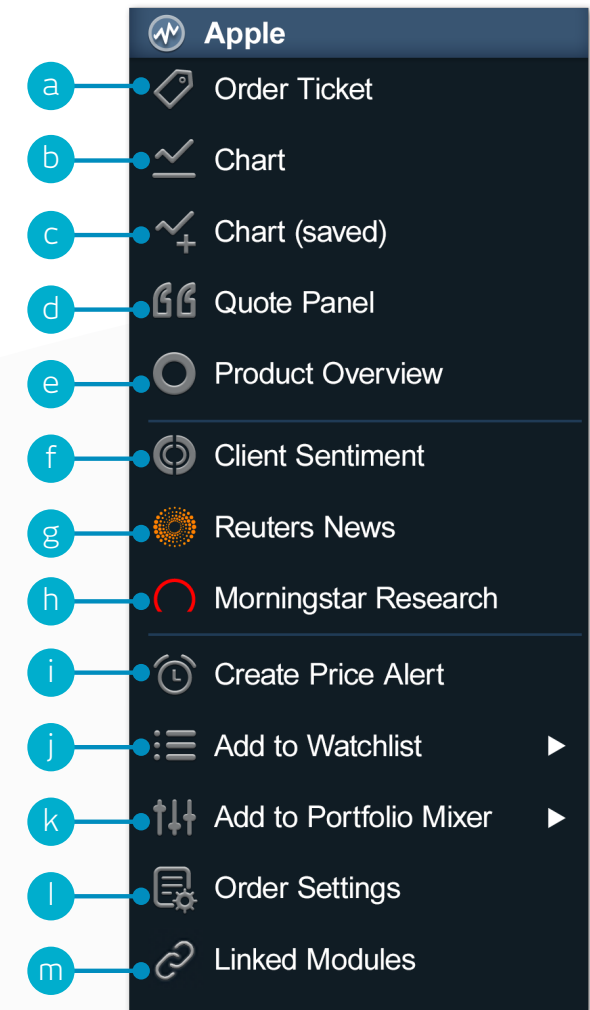
iPad and iPhone are trademarks of Apple inc.



3. Drop-down menu navigation

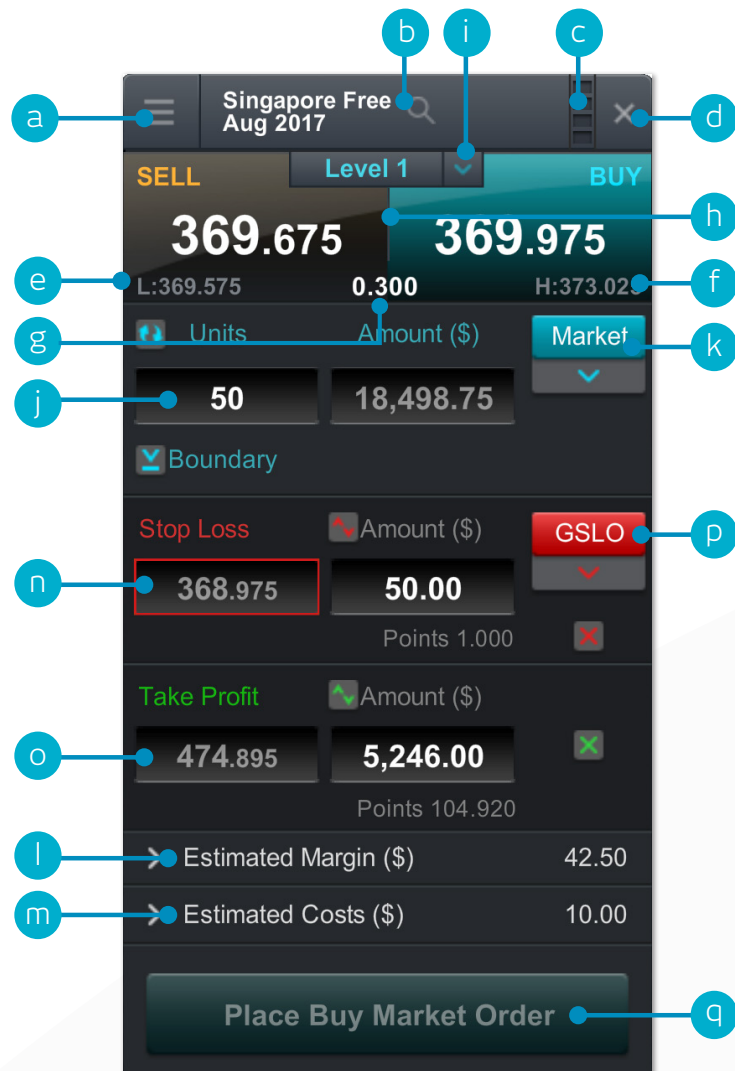
Click the drop-down menu icon next to a product name to unlock product-specific options

- a. Open a new order ticket for the product you've accessed the menu through
- b. Open a new chart for that product
- c. Open a saved chart for the product
- d. Open a quote panel with Buy and Sell Prices, daily highs and lows plus real-time spread. Note that the screen price is not necessarily the price your trade will be executed at
- e. View product information such as Trading Hours, margin requirements, Holding Costs and real-time spread
- f. View Client Sentiment for the product, related to both client count and position value, updated every minute.
- g. Open a Reuters News feed containing only news that's relevant to the product
- h. Access Morningstar equity research to view current cash fundamentals and Morningstar's proprietary Fair Value Estimate, which is the Morningstar analysts' estimate of the potential value of the share.
- i. Set and manage price alerts. View the real-time price difference between your alerts and the current market price
- j. Add this product to one of your watchlists or create a new one
- k. Add this product to the Portfolio Mixer
- l. Set order defaults for this specific product, such as default risk management and Order quantity
- m. Group platform features together, so when you update the product you look at, all the other features you've linked will also update



4. Place a trade using our Order ticket

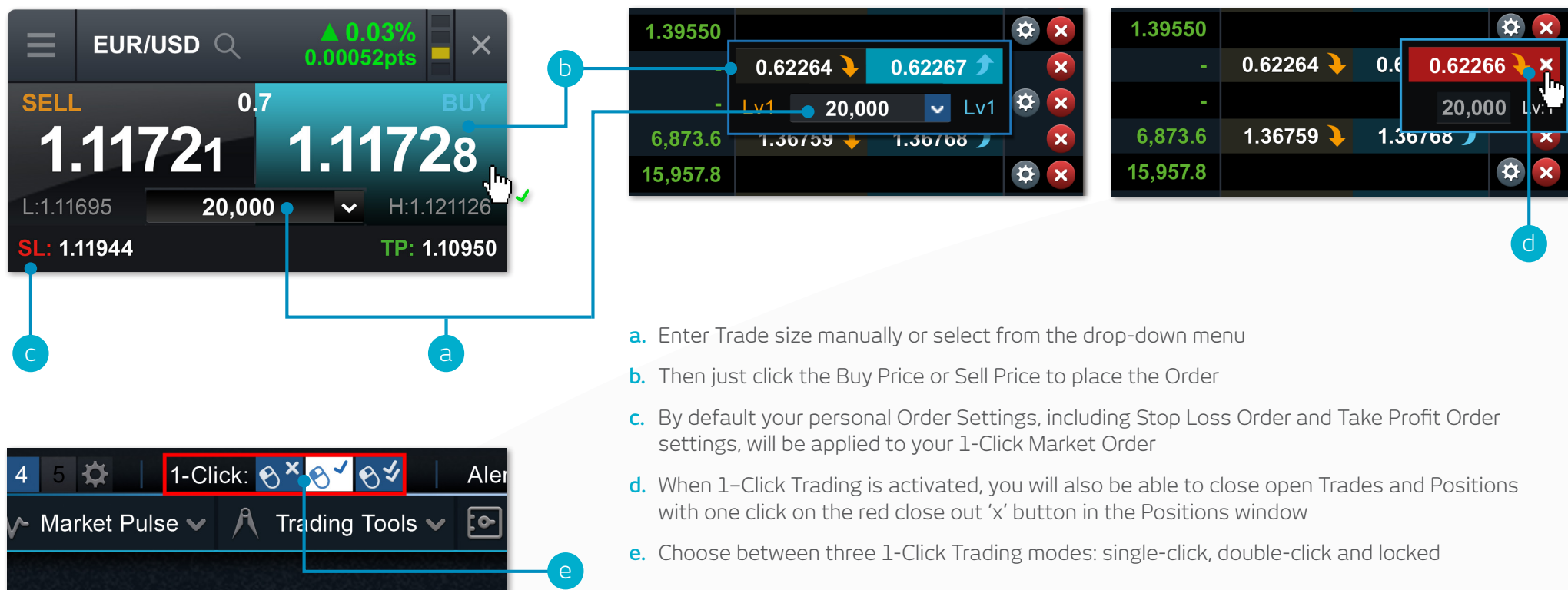
Click any Buy or Sell Price on the platform to launch an Order ticket



- a. You can open a product's drop-down options menu to access product information, Reuters News, live charting, module linking and much more
- b. Use the search function to change the product shown in the Order ticket
- c. Link two or more modules together, so that when you change the product in one module, the other module(s) will automatically update to show the new product
- d. Close Order ticket
- e. The lowest Price this product has reached during today's trading session
- f. The highest Price this product has reached during today's trading session
- g. The live spread between the Buy and Sell Price
- h. Click on the Buy or Sell Price to switch between a buy or a sell Order
- i. The Price Depth relevant to your Order quantity. Click here to show the Price Ladder. Larger trade sizes can attract a wider spread
- j. Enter the number of Units or exposure you want to buy or sell
- k. Change the Order type - choose between Market, Limit or Stop Entry Orders
- l. The estimated amount of margin required to enter this Position
- m. The estimated costs involved in entering this Position
- n. Add a Stop Loss Order to this Position to protect against adverse price movements
- o. Add a Take Profit Order to this Position to set a Target Price
- p. Set a regular Stop Loss, Trailing Stop Loss or a Guaranteed Stop Loss Order (GSLO) by Price or points distance. Trailing Stop Loss Orders follow favourable price movements by a set number of points. GSLOs guarantee an exit price, for a premium
- q. Submit your Trade

5. 1-Click Trading

The 1-Click Trading feature allows you to open or close a Trade with just one click. Activate this feature in the main toolbar or under Order Settings. Once activated, 1-Click Trading is turned on for all Price buttons by default.



The diagram illustrates the 1-Click Trading process across three screenshots:

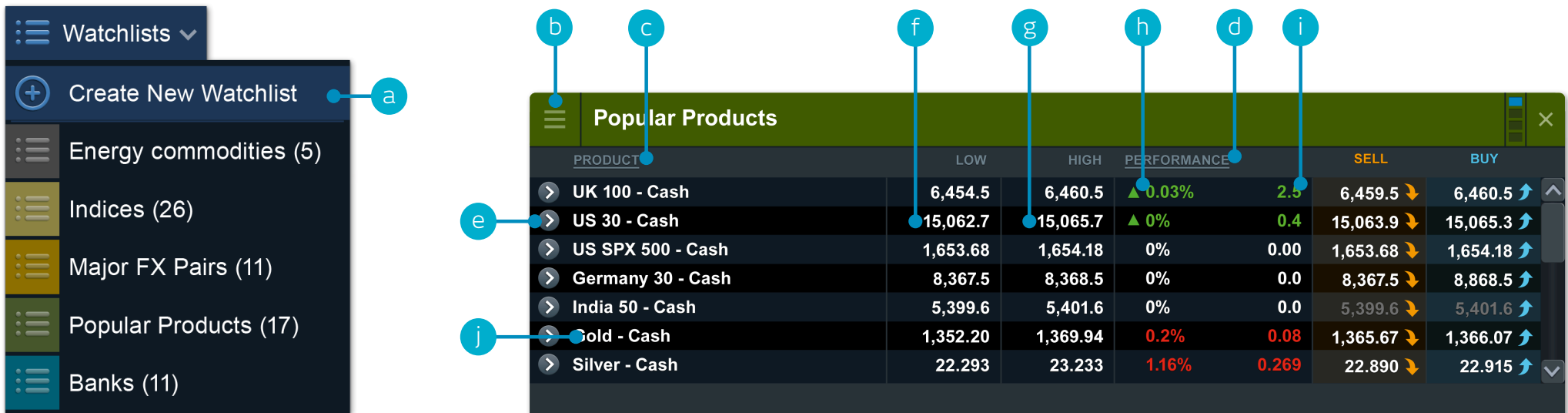
- a.** Enter Trade size manually or select from the drop-down menu
- b.** Then just click the Buy Price or Sell Price to place the Order
- c.** By default your personal Order Settings, including Stop Loss Order and Take Profit Order settings, will be applied to your 1-Click Market Order
- d.** When 1-Click Trading is activated, you will also be able to close open Trades and Positions with one click on the red close out 'x' button in the Positions window
- e.** Choose between three 1-Click Trading modes: single-click, double-click and locked

Note: You can change a number of 1-Click settings within the Order settings module

Please note that before you can use 1-Click Trading, you will need to carefully read and then accept the 1-Click Trading Terms of Use.

6. Watchlists

Create Watchlists containing your favourite products for easy access, then view a personalised Reuters News feed of related articles



The screenshot shows the 'Watchlists' module on the left and the 'Popular Products' table on the right. Callouts a-j point to specific features:

- a**: 'Create New Watchlist' button
- b**: Watchlist settings icon (three horizontal lines)
- c**: Product name column header
- d**: Performance column header
- e**: Product options menu icon (three horizontal lines)
- f**: Low price column
- g**: High price column
- h**: Percentage price movement column
- i**: Points price movement column
- j**: Product name in the table row

PRODUCT	LOW	HIGH	PERFORMANCE	SELL	BUY
UK 100 - Cash	6,454.5	6,460.5	▲ 0.03%	2.5	6,459.5 ↘ 6,460.5 ↗
US 30 - Cash	15,062.7	15,065.7	▲ 0%	0.4	15,063.9 ↘ 15,065.3 ↗
US SPX 500 - Cash	1,653.68	1,654.18	0%	0.00	1,653.68 ↘ 1,654.18 ↗
Germany 30 - Cash	8,367.5	8,368.5	0%	0.0	8,367.5 ↘ 8,368.5 ↗
India 50 - Cash	5,399.6	5,401.6	0%	0.0	5,399.6 ↘ 5,401.6 ↗
Gold - Cash	1,352.20	1,369.94	0.2%	0.08	1,365.67 ↘ 1,366.07 ↗
Silver - Cash	22.293	23.233	1.16%	0.269	22.890 ↘ 22.915 ↗

- a.** Create a new Watchlist here, then add products using their drop-down menus, or simply drag and drop a product into the Watchlist module
 - b.** Amend the settings of the Watchlist module and open a price ticker, delete Watchlists and personalise Reuters News
 - c.** Sort Watchlist by product name
 - d.** Sort Watchlist by performance
 - e.** Open an options menu for this product which gives access to product information, Reuters News, live charting, saved charts, Client Sentiment and much more
 - f.** The lowest Price this product has reached today
 - g.** The highest Price this product has reached today
 - h.** The percentage price movement this product has moved today
 - i.** The points price movement this product has moved today
 - j.** If a Watchlist is part of a linked group, click a product name to change the product shown throughout the group
- Map Reuters News to your Watchlist direct via the Reuters News module**

7. Monitor your account

Manage your existing Positions and Pending Orders, and view your entire account history

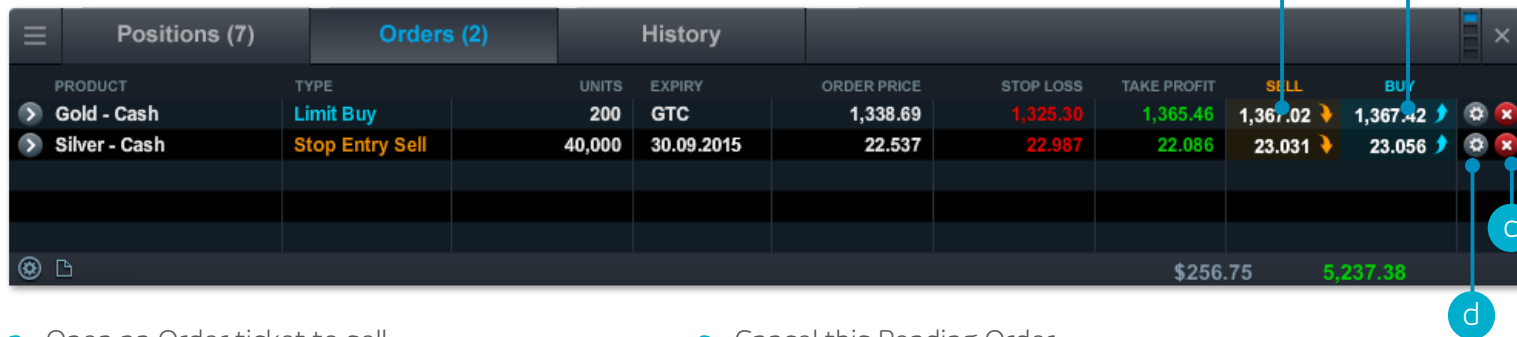
7.1 Positions



POSITION/ORDER#	B/S	UNITS	AMOUNT	PRICE	MARGIN	PROFIT/LOSS	STOP LOSS	TAKE PROFIT	SELL	BUY
- > Euro 50 - Cash [1]	B	1	\$5,424.1	3,690.7	20%	\$1,078.63	-8.21	-	3,685.1	3,686.7
O2-85-90SH / 18:33	B	1	\$5,424.1	3,690.7		-8.21	-	-		
+ > France 40 - Cash [2]	B	2	\$14,864.1	5,056.7	5%	\$738.71	-24.94	-	5,041.2	5,049.2
O2-85-90SA / 18:31	B	1	\$7,432.81	5,057.2		-13.20	-	-		
O2-85-90S9 / 18:31	B	1	\$7,431.34	5,056.2		-11.74	-	-		
+ > Gasoline - Cash [1]	B	1.1	\$2.57	1.6756	20%	\$0.50	-0.02	-	1.6586	1.6666
O2-85-90S8 / 18:30	B	0.1	\$0.23	1.6756		0.00	-	-		
O2-85-90S7 / 18:30	B	1	\$2.33	1.6756		-0.02	-	-		
+ > Heating Oil - Cash [1]	S	10	\$24.98	1.7916	20%	\$4.97	0.01	-	1.7878	1.7906
+ > Noble Group [1]	B	1,000	\$945.00	0.9450		\$46.75	-15.00	(G) 0.8900	0.9300	0.9350
						\$1,869.57	-48.17	Account Netting: Enabled		

- a. Expand and collapse all trades
- b. Collapse to view aggregate Position or expand to show individual Orders
- c. Sell Trade
- d. Buy Trade
- e. The number of Units of your aggregate Position
- f. The total exposure of the Position
- g. The total exposure of your aggregate Position
- h. The average entry Price of your aggregate Position
- i. The current aggregate profit or loss on this Position
- j. Open an Order ticket to sell
- k. Open an Order ticket to buy
- l. Modify an Order, including any risk management orders
- m. Close Position
- n. Close all Orders in this product
- o. Turn Account Netting off to place separate long and short Trades on the same product at the same time

7.2 Pending Orders

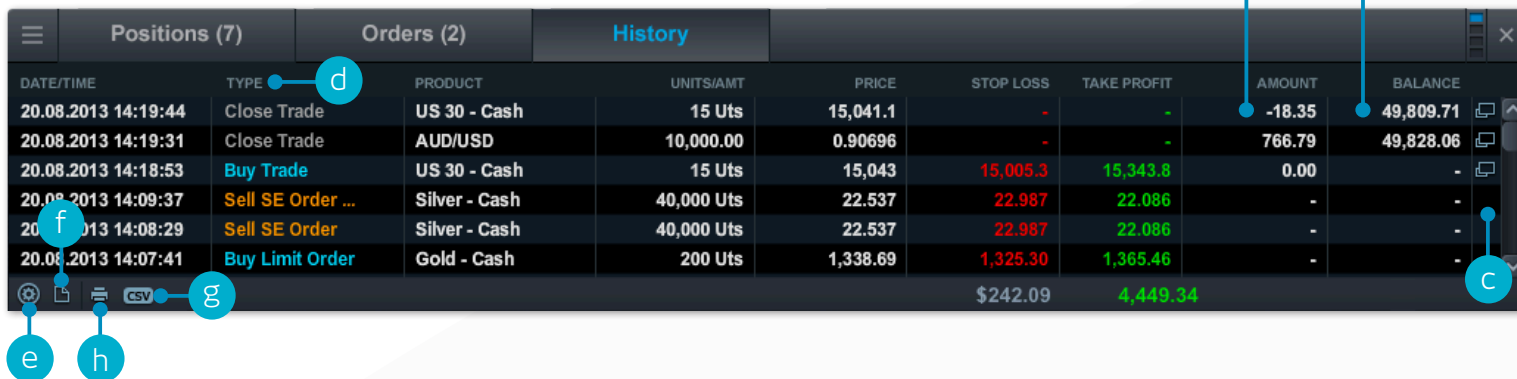


PRODUCT	TYPE	UNITS	EXPIRY	ORDER PRICE	STOP LOSS	TAKE PROFIT	SELL	BUY
Gold - Cash	Limit Buy	200	GTC	1,338.69	1,325.30	1,365.46	1,367.02	1,367.42
Silver - Cash	Stop Entry Sell	40,000	30.09.2015	22.537	22.987	22.086	23.031	23.056

\$256.75 5,237.38

- a. Open an Order ticket to sell
- b. Open an Order ticket to buy
- c. Cancel this Pending Order
- d. Modify this Pending Order, including price level and risk management

7.3 History



DATE/TIME	TYPE	PRODUCT	UNITS/AMT	PRICE	STOP LOSS	TAKE PROFIT	AMOUNT	BALANCE
20.08.2013 14:19:44	Close Trade	US 30 - Cash	15 Uts	15,041.1	-	-	-18.35	49,809.71
20.08.2013 14:19:31	Close Trade	AUD/USD	10,000.00	0.90696	-	-	766.79	49,828.06
20.08.2013 14:18:53	Buy Trade	US 30 - Cash	15 Uts	15,043	15,005.3	15,343.8	0.00	-
20.08.2013 14:09:37	Sell SE Order ...	Silver - Cash	40,000 Uts	22.537	22.987	22.086	-	-
20.08.2013 14:08:29	Sell SE Order	Silver - Cash	40,000 Uts	22.537	22.987	22.086	-	-
20.08.2013 14:07:41	Buy Limit Order	Gold - Cash	200 Uts	1,338.69	1,325.30	1,365.46	-	-

\$242.09 4,449.34

- a. The profit or loss achieved by this action
- b. Your account balance after this action
- c. View additional information such as Holding Costs and Price Depth details
- d. Filter by action type
- e. Access your Account Settings
- f. Access the Statement Centre
- g. Export your history to an excel file
- h. Print your trading history

7.4 Execution blotter

This module provides you with a quick and easy way to view executed Trade information without all the extra details associated with the full account history.

7.5 Statement Centre

Download daily trading statements. Have them emailed to you or to third-party email addresses.

8. Advanced Charting

Over 80 technical indicators, intuitive user interface, highly customisable and Chart Pattern Recognition function. Access a product's chart via its drop-down menu

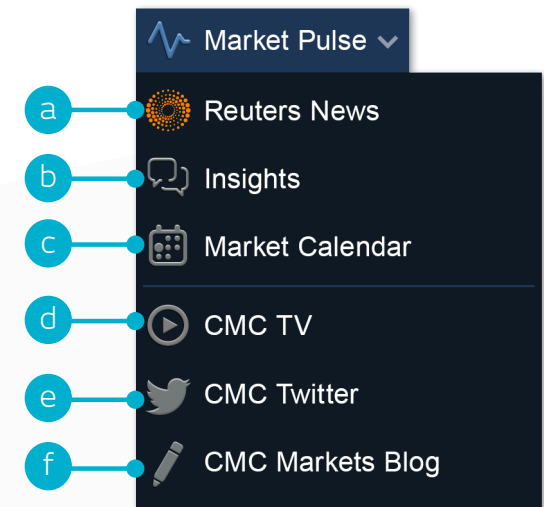
- a. Open the product options menu to access product information, Client Sentiment, Reuters News and much more
- b. Blue triangle: Click here to close or amend this Position - you can edit risk management directly on the chart
- c. Open a value box area to see the open, high, low and close values, plus greater detail on technical indicator values
- d. Open chart settings to set chart defaults, presets and other settings. Print a chart. Change the interval and timeframe of your chart history using a selection of options
- e. Choose different default chart sizes
- f. Choose between different chart types, including candlestick, renko and point and figure charts
- g. Add technical studies and overlays to your chart to identify potential technical trading set-ups
- h. Change settings, customise your technical indicator and view chart education
- i. Add a selection of drawing tools to your chart to identify strategic price levels and highlight areas of interest
- j. Add technical pattern and candlestick recognition to your chart – see the results evolve in real time
- k. Zoom in or out of the chart history



9. Market Pulse – news, Insights and Market Calendar

Get the latest news and updates on what's moving the markets with our Market Pulse tools

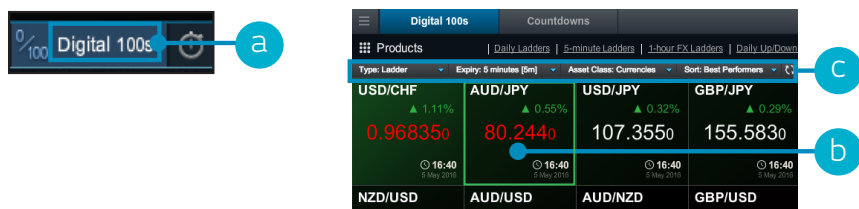
- a. The Reuters News module feeds live headlines and articles across all asset types straight into the platform as they are published. Reuters News can be filtered according to products within a Watchlist
- b. View a live stream of market updates direct from our team of global market analysts
- c. Use the Market Calendar to view the latest economic data releases from across the globe and set reminders for future updates
- d. Access our financial channel with global market analysis and strategy for the active trader
- e. Keep up to date with the latest major market events by following our targeted Twitter feed
- f. Up-to-date commentary on the financial markets from our Market Analysts in Singapore and around the world



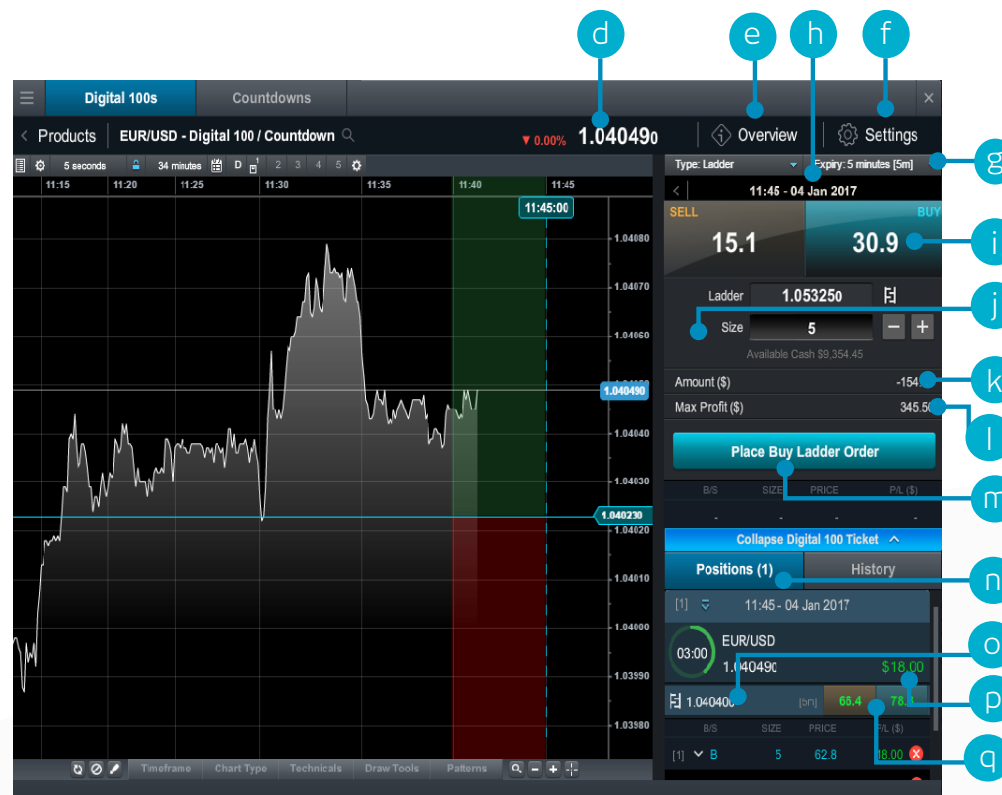


10. Digital 100s

Speculate with limited risk on whether or not an event will occur by the end of a set timeframe. 'Buy' the Digital 100 if you believe the event will occur, or 'sell' if you don't think it will occur. The buy and sell prices are always set between 0 and 100 – if the event occurs the Digital 100 settles at 100; if it doesn't occur, it settles at 0.



- a. Open the Digital 100s product grid (also accessible via the product library)
- b. Each product square shows the current settlement price, the number of open positions on each product, the daily performance and the expiry date and time
- c. Filter products by Digital 100 type, expiry or asset class. Sort by A-Z, or best/worst performers
- d. This is the current settlement price – the Digital 100 trade is settled against this price
- e. Select 'Overview' to view available expiries and Digital 100 types, trading hours, and trading and position limits for the selected product



- f. Remove pre-order confirmations, change default order sizes, set default chart types and presets
- g. Change Digital 100 type, or timeframe
- h. This is the current selected Digital 100 expiry time
- i. The order ticket shows the Digital 100 buy and sell prices for the selected strike, Digital 100 type and expiry
- j. Enter your order size or dial it up and down using the + or - icons
- k. This is the amount of cash that will be deducted when this Digital 100 position is entered. It's the

maximum amount of capital at risk

- l. This is the maximum profit potential for this Digital 100 position
- m. Select this button to place the Digital 100 order
- n. Switch between 'Positions' and 'History' view
- o. This is the strike price for this Digital 100 position – select to open its chart
- p. Current profit or loss of the aggregated Digital 100 position
- q. Current Digital 100 buy and sell prices for the strike price shown at 'O'

Digital 100 strikes and types:

- a. This is the currently selected strike price, shown on the chart and highlighted on the strike list
- b. This is the Digital 100 expiry time. The green and red shaded areas show where the settlement price needs to be at expiry to make a profit or loss
- c. The strike list shows available Digital 100 prices for the selected expiry and type for a range of strikes
- d. Our full range of charting tools to support your trading decisions

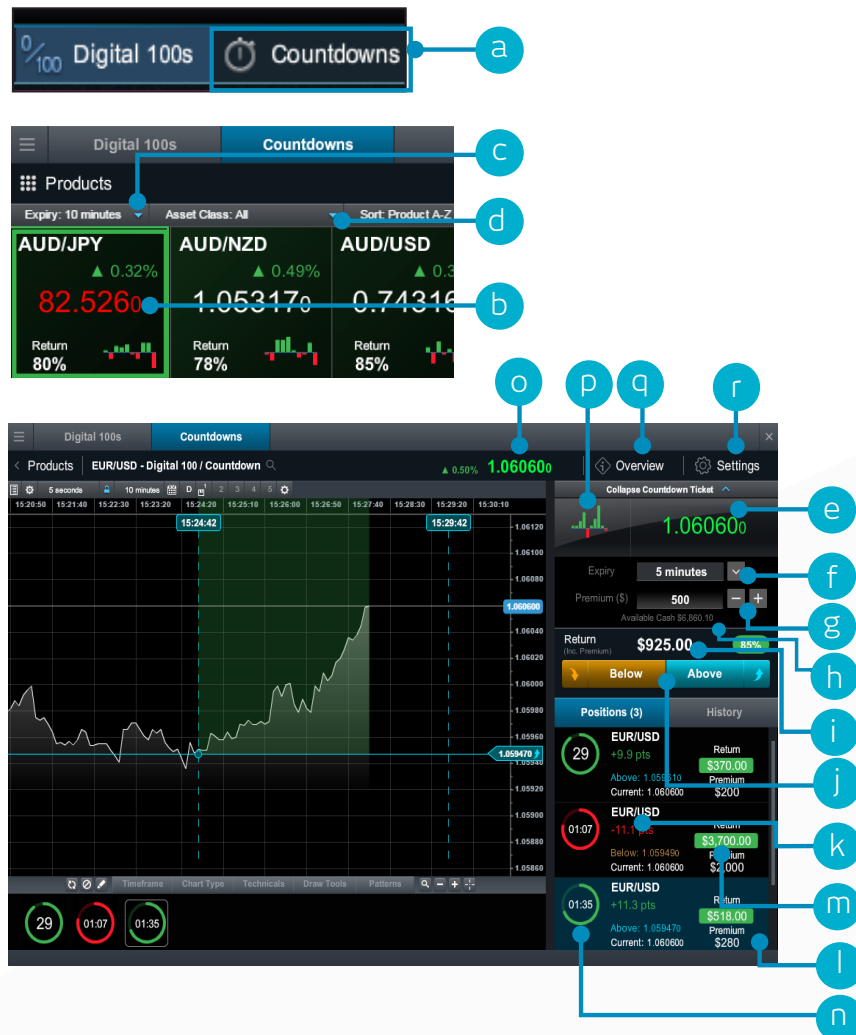
Digital 100 types:

- Ladder: Will the settlement price be at or above a specified strike price at the end of the Digital 100 expiry?
- Up/Down: Will the settlement price be at or above the previous period's close at the end of the Digital 100 expiry?
- One Touch: Will the settlement price reach a specific strike price before or at the end of the Digital 100 expiry?
- Range: Will the settlement price be within a specified range at the end of the Digital 100 expiry?



11. Countdowns

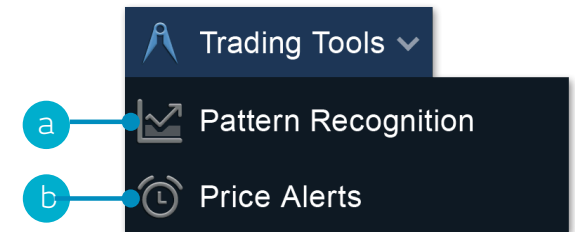
Countdowns provide a fast, straightforward way to trade with limited risk on the short-term price movements of financial markets



- Open the Countdowns product grid
- Each product square in the product grid shows the current Countdown price, the number of open positions on each product, the daily performance, the profit and the trend analyser tool. Click the square to launch an order ticket and chart
- Return and trend data update automatically if you change the expiry timeframe
- Sort the product grid by a variety of different options
- The order ticket shows the current Countdown price. With Countdowns you decide if you think the settlement price for this product will be above or below the current Countdown price at the end of your chosen expiry
- Select your expiry. Different expiries may have different profit percentages
- Enter your premium size or dial it up or down by set amounts with the +/- icons
- 'Available cash' is the amount you have available to place new Countdowns
- The profit amount is the total potential return if your Countdown is successful. It includes your original Premium
- Choose whether you think the settlement price will be above or below the current Countdown price at the end of your selected expiry. Click the relevant button to open your position
- The points difference between the current settlement price and your Countdown price
- Click any open position to see a live chart showing your chosen direction, your Countdown price and coloured shading that shows if you are winning or losing
- The Return amount and the Premium for this open position are shown here
- The Countdown clock will be coloured green, red or blue, depending on whether the position is winning, losing or a draw
- This is the current settlement price for this product
- The trend analyser draws the price action for the last 10 time intervals depending on expiry selected. For example, if a five-minute expiry is selected, each coloured bar represents the net price movement over five-minute intervals (12:00 , 12:05, 12:10 etc.)
- Click to view details of Return percentages across different expiries if you win or draw, plus minimum and maximum Premium sizes and total position sizes
- Remove pre-order confirmations, change default order sizes, set default chart types

12. Trading Tools

Use these trading tools to set up alerts for patterns and important price levels



- a. Set up the Pattern Recognition Scanner to alert you of potential technical trade set-ups every 15 minutes



- c. As default, alerts will pop up on the platform if you are logged in, or they will pop up when you log in. You can also set price alerts to be emailed to you via the icon on the top left of the alerts box






c

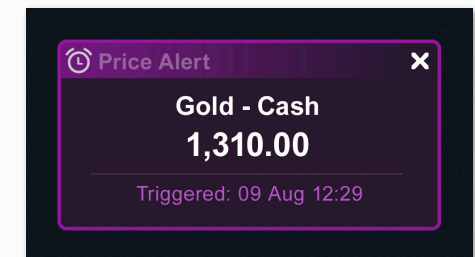
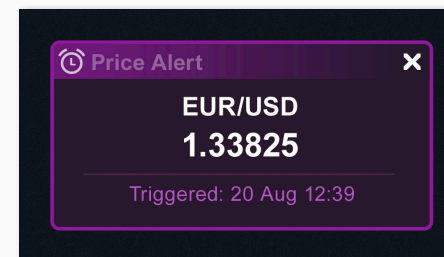
Price Alerts							
Triggered	Price	Type	Points Changed	SELL	BUY		
2015	1,340.00	Mid	▲ 1.21% 16.04	1,323.76	1,324.16		
<input checked="" type="checkbox"/> Play sound when Alert is triggered							

- d. At the top of the platform you can easily see if you have any alerts or patterns that have triggered



- b. Set and manage price alerts – view the real-time price difference against your alerts and the current market price

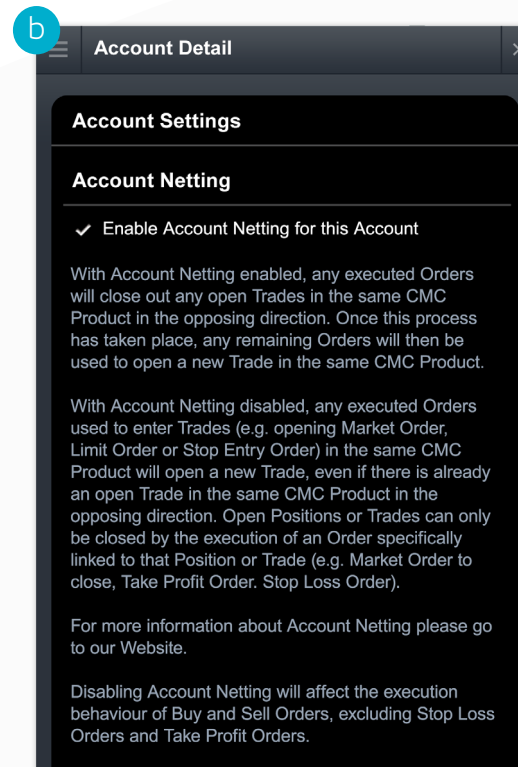
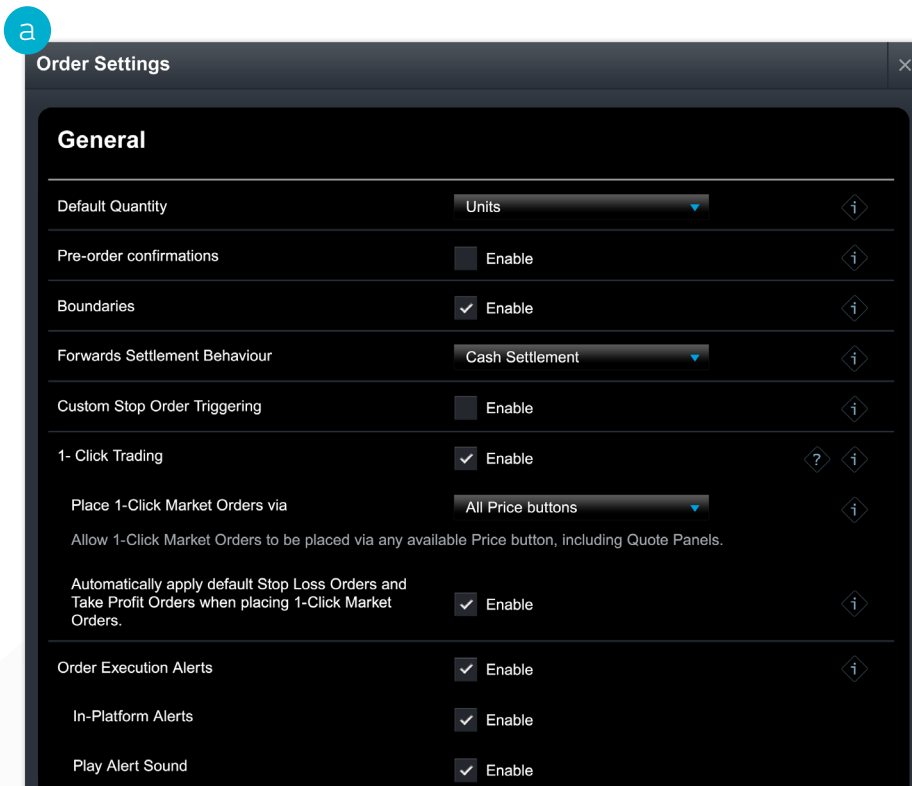
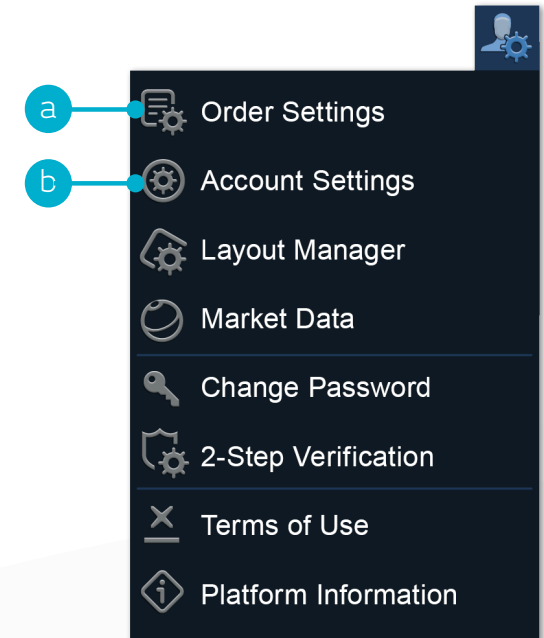
Product Name	Expires-Triggered	Price	Type	Points Changed	SELL	BUY	Email
Crude Oil Brent - Cash	20 Aug 12:54	110.400	Mid	▲ 0.31% 0.345	110.037	110.072	
EUR/USD	20 Aug 12:39	1.33825	Mid	▼ 0.32% 0.00441	1.34263	1.34270	
Gold - Cash	09 Aug 12:29	1,310.00	Mid	▼ 4.19% 57.21	1,367.21	1,367.61	
Euro 50 - Cash	20.09.2015	2,800.0	Mid	▲ 0.52% 14.7	2,784.3	2,786.3	
Platinum - Cash	20.09.2015	1,505.00	Mid	▼ 0.48% 7.35	1,511.45	1,513.25	



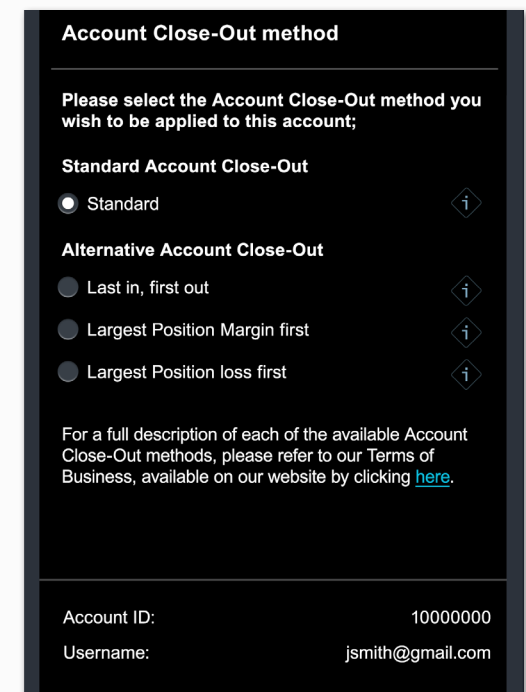
13. Settings

Ensure you set up your trading account to suit your individual needs by using the numerous inbuilt account preferences. Click on the User Preferences icon to access Account and Order Settings.

- Configure your preferred Order settings globally, by asset class or by specific products. Personalise settings on default Trade size, Boundaries, Forward Settlement Behaviour, 1-Click Trading, execution alerts, Stop Loss Orders, Take Profit Orders, Limit Orders and Stop Entry Orders
- Disable Account Netting to place separate long and short Trades on the same product at the same time. Select your preferred Account Close-Out method. Choose between 'Standard Account Close-Out' or 'Alternative Account Close-Out' ('Last in, first out', 'Largest Position Margin first' or 'Largest Position loss first')



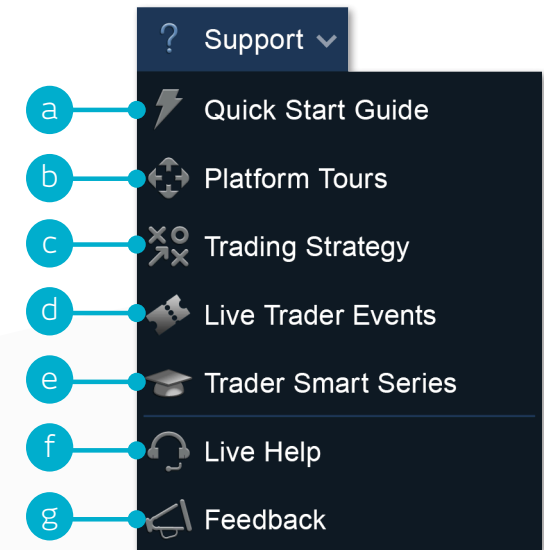
b Account detail continued



14. Trader Development and Live Help

Access our videos and written trader development material.
Leave feedback and get help directly through the platform

- a. Get a quick overview of the core features and functions of the Next Generation platform
- b. Watch platform tour videos explaining how to best use our many tools and features.
- c. Learn more about different trading strategies to help maximise your trading potential
- d. Develop your trading skills by attending live and online seminars presented by our market experts
- e. View a library of useful trading articles to help you enhance your trading knowledge
- f. Open an instant message conversation with a member of our trading helpdesk
- g. Leave feedback for our product development team to influence future enhancements to our platform



If you have any questions while getting to know the platform, please don't hesitate to contact us on 1800 559 6000 or clientmanagement@cmcmarkets.com.sg.

Note: Capitalised terms shall have the meanings given to them in our Terms of Business and/or denote a platform feature or functionality specific to CMC Markets.

Apple, iPad, and iPhone are trademarks of Apple Inc., registered in the U.S. and other countries. App Store is a service mark of Apple Inc. Android and Google Play are trademarks of Google Inc.

CMC Singapore
9 Raffles Place #30-02 Republic Plaza, Tower 1
Singapore
048619

Tel: 1800 559 6000
Fax: +65 6559 6099
Email: info@cmcmarkets.com.sg

The content in this presentation is for general introductory information only for our customers with our Next Generation Platform's trading account, and is not to be regarded as an advice or a recommendation with respect to any investment product and does not have regard to your specific investment objectives, financial situation and particular needs. Past performance is not necessarily indicative of future performance. Examples/diagrams given are for illustration only. The content is subject to the applicable Terms of Business (and its associated documents) governing your trading account. We do not warrant the correctness, accuracy or completeness of any information given and reserved the right to amend any information at any time without notice. You may only use the materials solely for your own personal and noncommercial use only. If you have any queries or requires any updates, please contact us at +65 6559 6000. CMC Markets Singapore Pte. Ltd. (Reg No./UEN: 200605050E).